

13TH ANNUAL SYMPOSIUM

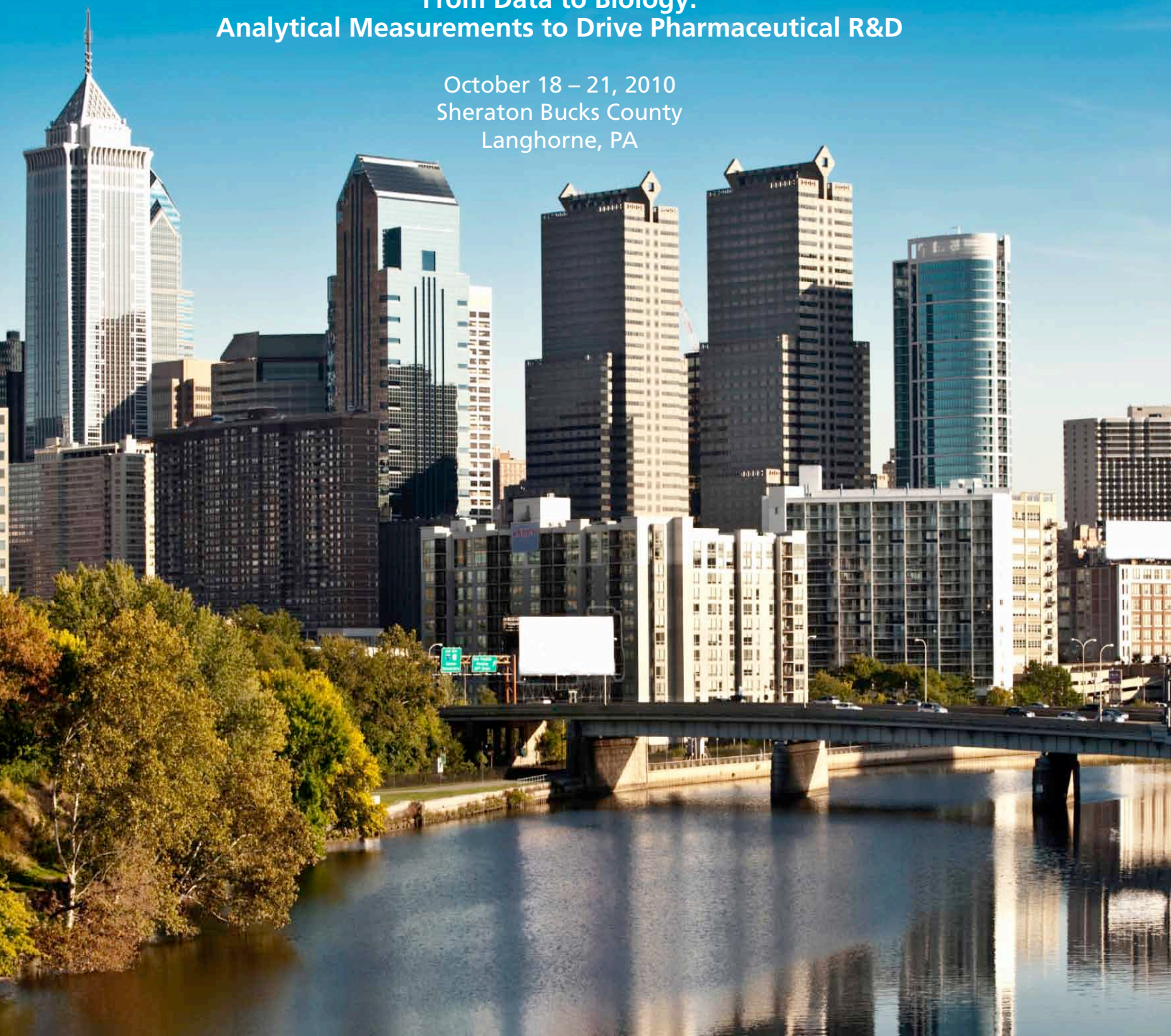
# Chemical & Pharmaceutical Structure Analysis

*Where Technology and Solutions Meet*



## From Data to Biology: Analytical Measurements to Drive Pharmaceutical R&D

October 18 – 21, 2010  
Sheraton Bucks County  
Langhorne, PA





### Program Chair

Petia Shipkova  
*Bristol-Myers Squibb*



### Plenary Lecture

Bradley L. Ackermann  
*Eli Lilly and Company*

### Keynote Lecture

Jonathan Josephs  
*Bristol-Myers Squibb*

### Poster Session Chairs

Jim Stephenson  
*RTI International*

Matthew Szapacs  
*GlaxoSmithKline*

Tracie Williams  
*Centers for Disease Control  
and Prevention*

Doug Zhang  
*Bristol-Myers Squibb*

### Vendor Session Chairs

Mark Hayward  
*Lundbeck Research USA*

Ragu Ramanathan  
*Bristol-Myers Squibb*

### History

This annual meeting began in 1998 and was the first industry-led event to complement academic-based meetings and address the specific needs of industry researchers. The program highlights current industry trends and relevant topics. The broad-based support has allowed the meeting to evolve into a premier industry-led event that is dedicated to promoting awareness of issues and needs associated with research and development.

### Goals

The goal of CPSA is to provide in-depth review of innovative technology and industry practices through open discussion of industry-related issues and needs. The program will highlight speakers and sessions that provide real-world experiences with new technologies and critical insights into current issues and future needs. Education and specialized training are the foundation of all CPSA events.

### Format

The meeting features a unique format to allow scientists to openly share their comprehensive perspectives on industry-related issues and needs. First-hand experiences with specific applications and technologies are openly discussed.

### Symposia Feature

Industry Issues & Needs · Analysis Strategies · Performance Benchmarks

### Roundtables Feature

Commercial Technology · Mainstream Applications · Analysis Trends

### NEW Colloquium Series

The CPSA Colloquium Series is a new event for CPSA 2010 and will be held in parallel to the Symposia sessions on Tuesday, October 19, and Wednesday, October 20, at the Sheraton Bucks County Hotel. A session on "A Practical Guide to Regulated Bioanalysis" and a session on International Harmonization of Bioanalytical Guidance" will be chaired by Roger Hayes of Merck Research Laboratories and Mark Arnold of Bristol-Myers Squibb, respectively. The goal of this event will be to provide attendees with an opportunity to:

- Further enhance the specialized training from the CPSA short courses; and
- Provide focus on industrial activities related to regulatory issues and industrial workflows

The CPSA Colloquium will be held in parallel to the CPSA 2010 Symposia on Tuesday and Wednesday, October 19 & 20, at the Sheraton Bucks County Hotel.

### Short Courses Feature

Practical Industry Applications · Fundamentals  
Real-World Examples · Emerging Methods and Techniques

CPSA attracts sponsors, thought leaders, and participants who are dedicated to the spirit of cooperation to achieve common goals.  
[Imagination needed!](#)

## Short Courses – Monday, October 18 8:30 am - 4:30 pm

### Method Development for LC/MS: Traditional Approaches and Emerging Trends

*Instructors: Roger N. Hayes, Schering-Plough; Shanr R. Needham, Alturas Analytics*

This practical course on HPLC method development for LC/MS covers the specifics of how sample preparation and HPLC methods are developed for interfacing to ESI and APCI. The course discusses the importance of HPLC when interfaced with mass spectrometry including the HPLC separation of undetected matrix components, isomers and labile metabolites. The development of HPLC methods for LC/MS for use in qualitative and quantitative analysis throughout drug discovery and drug development are presented.

### High-throughput Drug Discovery Support: LC/MS Strategies for Method Development, Profiling and Workflow Solutions

*Instructors: Mark J. Hayward, Lundbeck Research USA; Ken Lewis, OpAns*

Integrated HPLC and MS approaches for high throughput analysis have become standard practice in a pre-clinical drug discovery setting. Successful support strategies often provide a blend of high throughput methodologies with appropriate resources (tools and personnel). This course will target the “bread and butter” functions of discovery medicinal chemistry support. Real-world experiences with method development and analytical support will be discussed.

### Is Poor Bioavailability in Early Drug Discovery a Problem? If So, How Can We Solve It?

*Instructor: Ayman El-Kattan, Pfizer*

Poor oral bioavailability is one of the leading causes of compound failure in preclinical and clinical development. Compounds with poor oral bioavailability have low plasma exposure and tend to demonstrate high inter-individual variability, which can limit their therapeutic application. Poor oral bioavailability in preclinical species does not necessarily translate into poor human oral bioavailability.

Targeted Audience: Medicinal Chemists, Discovery Biologists, ADME Scientists

### Analysis of Peptides and Proteins: Sample Preparation to Identification to Quantitation

*Instructors: Nalini Sadagopan, Agilent Technologies; Gary A. Valaskovic, New Objective; Chuck Witkowski, Protein Discovery*

Within the last decade, nanoscale liquid chromatography-tandem mass spectrometry (nLC-MS/MS) has revolutionized the identification of proteins and peptides in biological matrices. The technology has developed from being a purely qualitative tool for (global) proteomics to a quantitative method suitable for peptide/protein biomarker validation.

### Fundamentals of Structural Characterization by NMR

*Instructor: David J. Russell, Varian*

This short-course will cover the essentials of both <sup>1</sup>H and heteronuclear NMR as applicable to structural problems in the organic chemistry environment. This will be a hands-on, focused discussion. We will begin with a quick discussion of the fundamental aspects of the NMR experiment that have a direct impact on the final spectra and proceed through the basics of 1D NMR interpretation. Subsequent sections will focus on a particular type of experiment (e.g., Nuclear Overhauser Experiments, proton-proton coupling experiments, proton-carbon coupling experiments, etc.).

Visit [www.cpsa-usa.com](http://www.cpsa-usa.com) for more details on CPSA 2010 short courses





Make plans to attend the 13th Annual Symposium on Chemical and Pharmaceutical Structure Analysis (CPSA 2010). This unique event is highly interactive. The program features updated perspectives and experiences on chemical and pharmaceutical structure analysis. Imagination and stimulating discussion are central to each CPSA function and session.

## Call for Papers – Abstracts due by October 1

Abstracts are being accepted for the 13th Annual CPSA USA Symposium on Chemical and Pharmaceutical Structure Analysis. Please forward abstracts including title and co-author(s) electronically to Mike Lee at [info@milestonedevelopment.com](mailto:info@milestonedevelopment.com).

- Abstracts must be received by October 1, 2010
- Maximum length is 350 words

A sample abstract is available at [www.cpsa-usa.com/2010/abstracts.html](http://www.cpsa-usa.com/2010/abstracts.html) as a guide for format. Please visit the conference website for more information ([www.cpsa-usa.com](http://www.cpsa-usa.com))!

### Registration

To register for CPSA USA 2010, please download the registration form from the conference website at [www.cpsa-usa.com](http://www.cpsa-usa.com). Submit by FAX (267-757-0463) or mail directly to Dr. Mike Lee at the address noted below.

All fees are in US Dollars.

#### Conference Registration

Pre-Registration: June 1 – October 8, 2010 (Save 50%)

On Site Registration: After October 8, 2010

#### Payment Methods

Check: Make payable to Milestone Development Services  
(*Must be drawn on US bank*)

Credit Card: American Express, MasterCard, Visa accepted.

Wire Transfer: Contact [info@milestonedevelopment.com](mailto:info@milestonedevelopment.com) for wire transfer instructions.

Cash: Send the completed CPSA USA Registration Form to the CPSA office by fax (+1 267-757-0463) or mail directly to:

Dr. Mike Lee  
Attn: CPSA USA  
P.O. Box 178,  
Newtown, PA 18940-0178, USA

Full payment is due upon conference registration

#### Hotel Registration

A special CPSA room rate of \$129 per night is available at the Bucks County Sheraton Hotel when you book your room by September 24, 2010. Please call the Sheraton Hotel reservations department directly at 215-547-4100 and mention (code: [cpsa/milestone](http://www.cpsa-usa.com)) to reserve with the CPSA room rate. Visit the Sheraton Bucks County Sheraton Hotel website for more information ([www.Sheraton.com/BucksCounty](http://www.Sheraton.com/BucksCounty)).

### CPSA is User Friendly!

CPSA attracts sponsors, thought leaders, and participants who are dedicated to the spirit of cooperation to achieve common goals. Imagination needed.

*CPSA - Where Technology and Solutions Meet!*

